

# Primary 6 Meet-the-Parents Session

---

Anglo-Chinese School (Junior)

22 January 2025




# Programme

## Part 1 (MTP @ P6 Classrooms)

- Sharing on Class Expectations and Administrative Matters

## Part 2 (MTP @ PAH)

- Principal's Address.
- Sharing on School Experiences, Student Matters and Partnership with Parents

**SOARING IN UNITY** 

**CHART THE COURSE**  
What are our **goals** for the year and what do we **need** to achieve them?

**READY THE CREW**  
What are our unique **gifts** that we can use to **play our part**?

**ASCEND THE SKIES**  
How can we work together to **lead** and **serve** others?

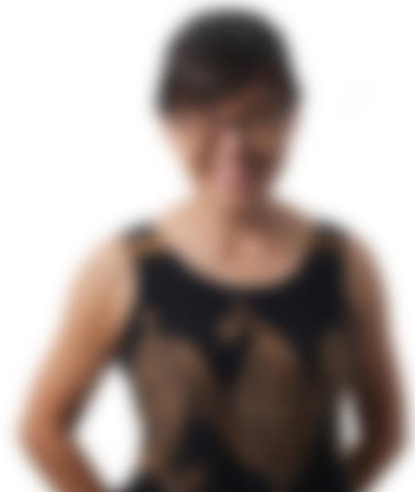


Anglo-Chinese School (Junior)

A Methodist Institution  
(Founded 1886)

16 Winstedt Road, Singapore 227988 | Tel: (65) 6733 7911 | Fax: (65) 6734 6518 |  
[www.acsj.moe.edu.sg](http://www.acsj.moe.edu.sg)

**Year Head, Miss Lee May Po**



[lee\\_may\\_po@moe.edu.sg](mailto:lee_may_po@moe.edu.sg)

**Assistant Year Head, Mr Teow Jing Ho**



[teow\\_jing\\_ho@moe.edu.sg](mailto:teow_jing_ho@moe.edu.sg)



**Anglo-Chinese School (Junior)**

A Methodist Institution  
(Founded 1886)

16 Winstedt Road, Singapore 227988 | Tel: (65) 6733 7911 | Fax: (65) 6734 6518 |  
[www.acsj.moe.edu.sg](http://www.acsj.moe.edu.sg)


# Building on Trust, Partnership as One

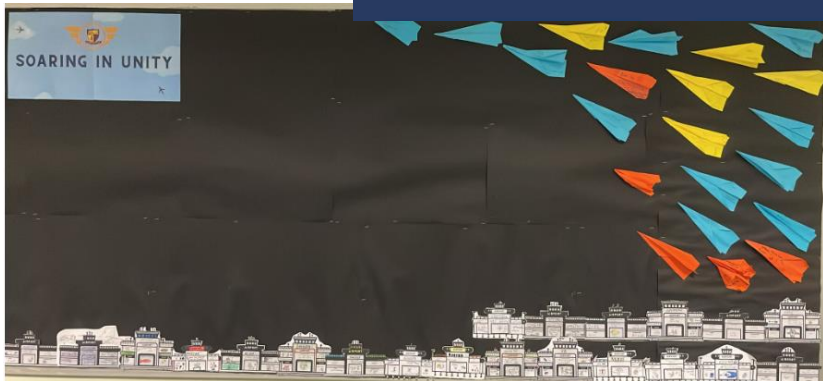


**HOME SCHOOL COMMUNITY**

# 1st Week of School



**SOARING IN UNITY** 



Anglo-Chinese School (Junior)

A Methodist Institution  
(Founded 1886)

16 Winstedt Road, Singapore 227988 | Tel: (65) 6733 7911 | Fax: (65) 6734 6518 | [www.acsj.moe.edu.sg](http://www.acsj.moe.edu.sg)



# An ACSian Gentleman

## In Speech:

- Is polite to everyone;
- Greets everyone;
- Says, “Please” & “Thank you”;
- Responds graciously;
- Speaks at the right volume.

## In Actions:

- Treats others with respect;
- Is punctual;
- Wears his uniform smartly;
- Waits for his turn;
- Plays safely and fair;
- Listens attentively;
- Raises his hands to ask/answer questions;
- Keeps his desk area organised and tidy;
- Takes care of his belongings.



Anglo-Chinese

A Methodist  
(F)

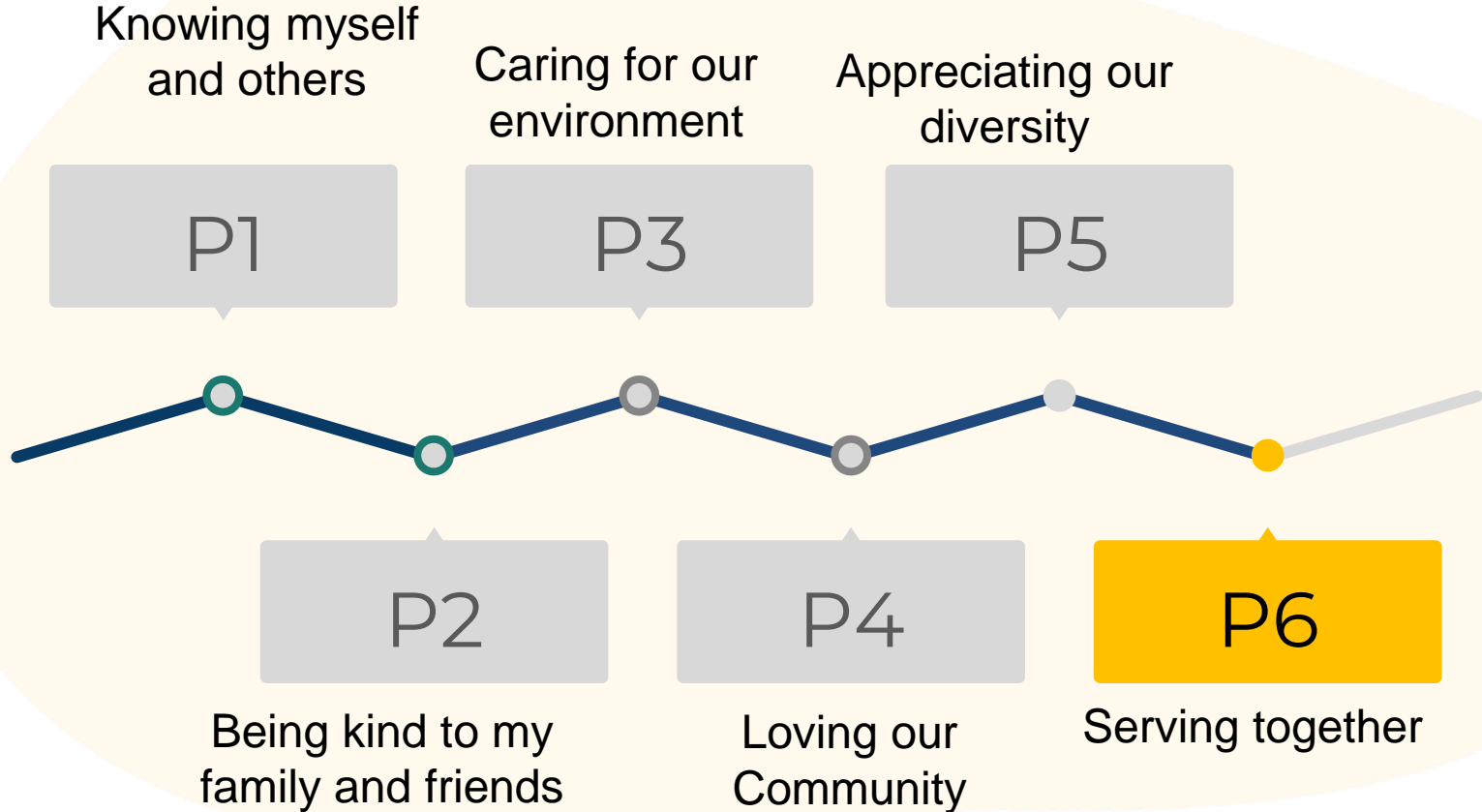


Anglo-Chinese  
School

# ACSian Outcomes

	<b>ASPIRATION</b> The ACSian thinker embraces the future with an aspiring mindset		<b>CHARACTER</b> The ACSian gentleman of Character demonstrates love and integrity at all times		<b>SERVICE</b> The ACSian servant leader works with others to make a positive impact	
	<b>CURIOSITY</b>	<b>EXCELLENCE</b>	<b>LOVE</b>	<b>INTEGRITY</b>	<b>COLLABORATION</b>	<b>LOYALTY</b>
P5-6	<p>I explore new ideas and knowledge independently</p> <p>I take initiative to deepen my learning</p> <p>I share my learning with others</p>	<p>I take pride in my work</p> <p>I persevere in all that I do</p> <p>I know what my goals are and I work towards them</p> <p>I reflect on my work and seek self-improvement</p>	<p>I contribute to a positive school environment by being sensitive to the feelings of others</p> <p>I show empathy to understand the needs of others.</p> <p>I take the initiative to help others</p>	<p>I uphold the truth in thought, word and deed</p> <p>I choose to do what is right regardless of what others do</p> <p>I reflect on my mistakes and will not repeat the same mistakes</p>	<p>I communicate and express my thoughts and feelings appropriately</p> <p>I work with my peers, using our strengths to achieve common desired goals</p> <p>I clarify issues with others and settle differences that arise when working with others</p> <p>I respect the views of others and seek to understand their perspectives</p>	<p>I participate actively in school events</p> <p>I serve the community</p> <p>I seek opportunities to serve the community</p> <p>I celebrate the joys and successes of my schoolmates</p> <p>I support my nation and respect my national identity</p>

# The ACS(J) CCE Journey





# [All year round] Leadership Opportunities:

Recess Managers, Peer Support Leaders, Class Captains, Subject Captains



We strongly believe that every ACSian can and should serve those around them



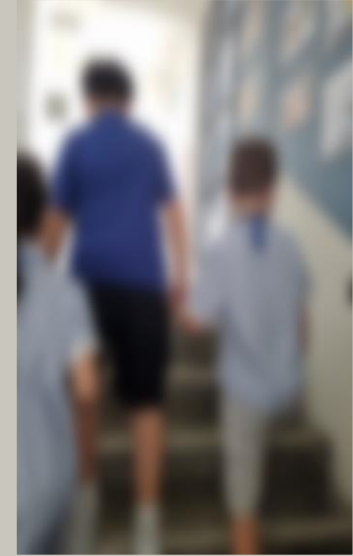
Anglo-Chinese School (Junior)

A Methodist Institution  
(Founded 1886)

16 Winstedt Road, Singapore 227988 | Tel: (65) 6733 7911 | Fax: (65) 6734 6518 |  
[www.acsj.moe.edu.sg](http://www.acsj.moe.edu.sg)

# [October]

## Values-in-Action (VIA): Bless a Preschool / Active Ageing Centre



Anglo-Chinese School (Junior)

A Methodist Institution  
(Founded 1886)

16 Winstedt Road, Singapore 227988 | Tel: (65) 6733 7911 | Fax: (65) 6734 6518 |  
[www.acsj.moe.edu.sg](http://www.acsj.moe.edu.sg)

Here are some experiences we will have this year!

Serving  
Others

Learning  
Journeys

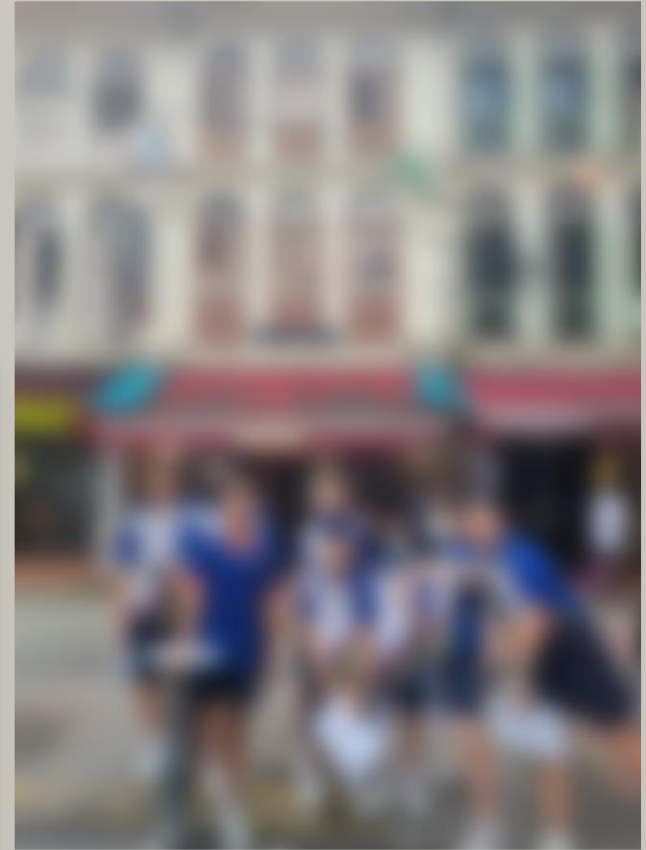
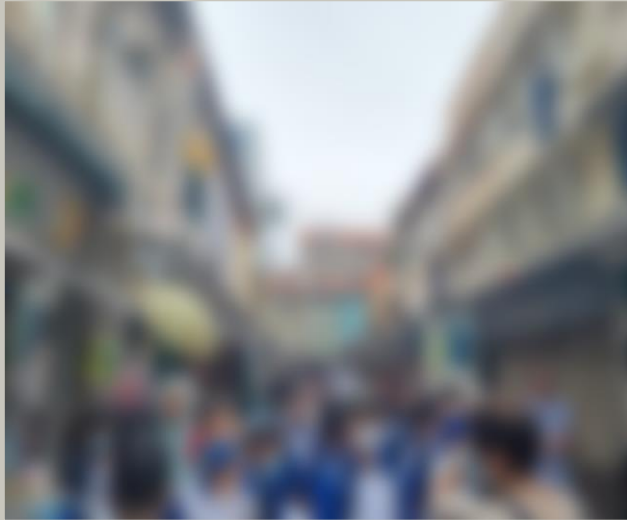
Preparation  
for graduation  
/ Sec 1

School  
Events

PSLE

Career  
Guidance

# [January & October] Cultural Learning Journeys



Anglo-Chinese School (Junior)

A Methodist Institution  
(Founded 1886)

16 Winstedt Road, Singapore 227988 | Tel: (65) 6733 7911 | Fax: (65) 6734 6518 |  
[www.acsj.moe.edu.sg](http://www.acsj.moe.edu.sg)



# Anglo-Chinese School (Junior)

A Methodist Institution  
(Founded 1886)

## Department Programmes

# P6 English

## All Classes

### Language Learning towards building:

- empathetic and a confident communicators
- discerning readers
- creative inquirers

*equipped with 21st century competencies for the globalised world*



Anglo-Chinese School (Junior)

A Methodist Institution  
(Founded 1886)

16 Winstedt Road, Singapore 227988 | Tel: (65) 6733 7911 | Fax: (65) 6734 6518 |  
[www.acsj.moe.edu.sg](http://www.acsj.moe.edu.sg)



## Newsbites

### Once every unit

- Discussion of current affairs
- Gain multiple perspectives & develop empathy

## Extensive Reading

(What's Up newspaper &  
Inspire magazine)

### 30 min every week

- Read widely
- Variety of genres



# Chinese Language

## Chinese 华文分班

**普通华文**  
Standard Chinese

- Pull Out class
- Core Classes
- Enrichment Classes

**生活看板** Real life application  
**核心课文** Core Passage  
**自读课文** Self Read passage  
**深广课文** Enrichment passage ( for Enrichment classes only )

**基础华文**  
Foundation Chinese  
Focus on Oral and Listening  
Comprehension

**生活看板** Real life application  
**核心课文** Core Passage

**高级华文**  
Higher Chinese  
Focus on Composition  
and Written  
comprehension

**生活看板** Real life application  
**核心课文** Core Passage  
**自读课文** Self Read passage  
**深广课文** Enrichment passage



Anglo-Chinese School (Junior)

A Methodist Institution  
(Founded 1886)

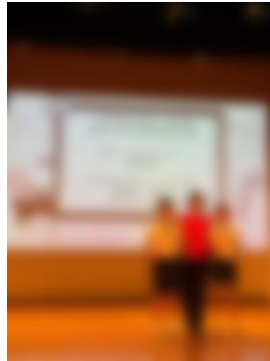
16 Winstedt Road, Singapore 227988 | Tel: (65) 6733 7911 | Fax: (65) 6734 6518 |  
[www.acsj.moe.edu.sg](http://www.acsj.moe.edu.sg)

# Building Confidence in Learning Chinese Language...

Reading Programme



Oratorical Competitions



ezhishi online resources  
E-magazine ebooks

ACS Borderless Classroom



Hosting students from China



Interactive activities & videos in classroom teaching

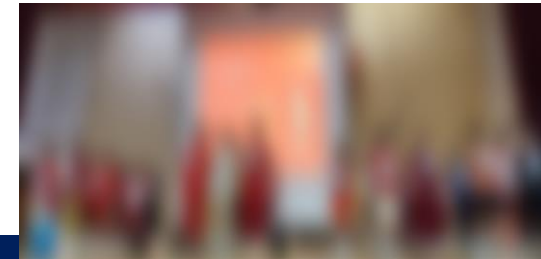
Mother Tongue Fortnight – activities, games & quizzes



Chinese New Year celebrations



Drama performances



Anglo-Chinese School (Junior)

A Methodist Institution  
(Founded 1886)

16 Winstedt Road, Singapore 227988 | Tel: (65) 6733 7911 | Fax: (65) 6734 6518 |  
[www.acsj.moe.edu.sg](http://www.acsj.moe.edu.sg)

# Building Confidence in Learning Malay Language

## Reading Programme



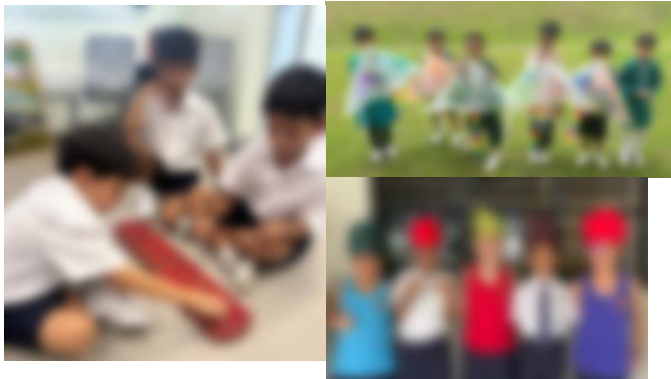
## Storytelling & Writing Competitions



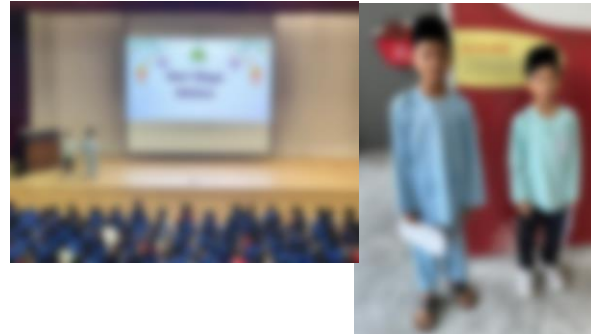
## Interactive activities in classroom teaching



## Mother Tongue Fortnight – activities, games & quizzes



## Hari Raya celebrations



## Silat cultural performances in School

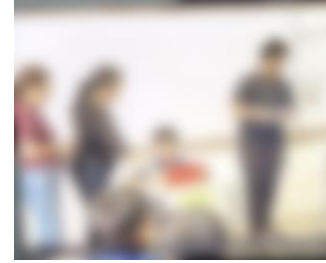
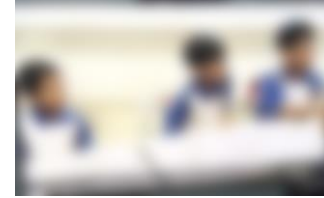


# Building Confidence in Learning Tamil Language

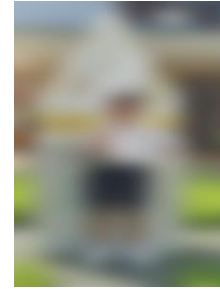
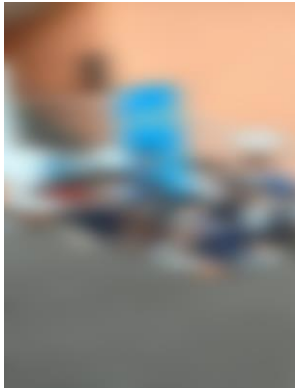
## “Ponggal” Learning Journey



‘TamilFest’@  
UPTLC



Spelling Bee  
competition by  
mediacorp



Poetry Recital Competition  
and our winners

Drama @  
Republic Polytechnic

MT fortnight activities

E-learning websites : 1)Pazhagutamil  
2)SLS

# Mathematics

## Standard

- Problem-solving strategies
- Real-life application
- Development of Mathematics processes and meta-cognition

## Foundation

- Focus on basic concepts and skills
- Heuristics for problem-solving



Anglo-Chinese School (Junior)

A Methodist Institution  
(Founded 1886)

16 Winstedt Road, Singapore 227988 | Tel: (65) 6733 7911 | Fax: (65) 6734 6518 | [www.acsj.moe.edu.sg](http://www.acsj.moe.edu.sg)

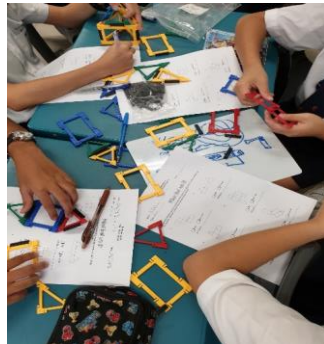


# Building Interest in Mathematics

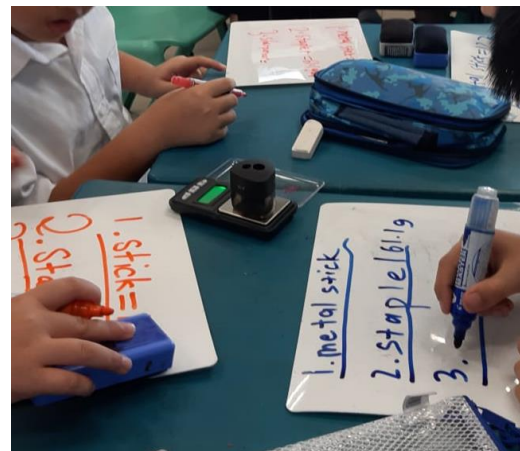
## Games and Quizzes



## Hands-on Activities



## Real-life application



## Use of ICT



Anglo-Chinese School (Junior)

A Methodist Institution  
(Founded 1886)

16 Winstedt Road, Singapore 227988 | Tel: (65) 6733 7911 | Fax: (65) 6734 6518 |  
[www.acsj.moe.edu.sg](http://www.acsj.moe.edu.sg)

# Science

## Standard

- Mastering scientific facts and concepts through the inquiry-based approach
- Development and mastery of skills and processes
- Application of knowledge and concepts to real-life situations

## Foundation

- Focus on building their foundation and understanding of basic scientific facts and concepts through the inquiry-based approach
- Development of skills and processes
- Exposure to the application of skills and processes to real-life applications



Anglo-Chinese School (Junior)

A Methodist Institution  
(Founded 1886)

16 Winstedt Road, Singapore 227988 | Tel: (65) 6733 7911 | Fax: (65) 6734 6518 |  
[www.acsj.moe.edu.sg](http://www.acsj.moe.edu.sg)

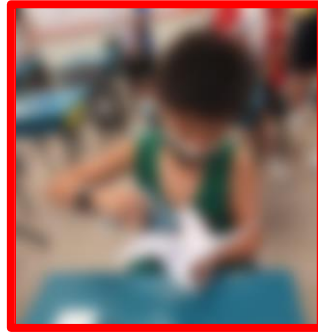
# Science: Exploration and Innovation

CSI

(Creative Science Investigation)



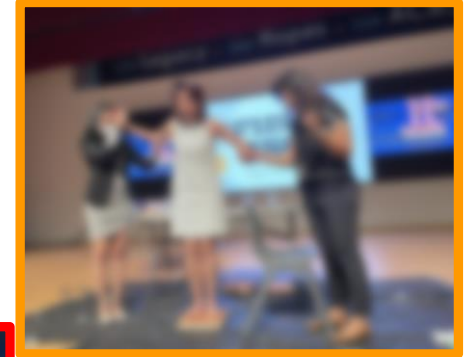
Use of ICT



Enrichment Programmes



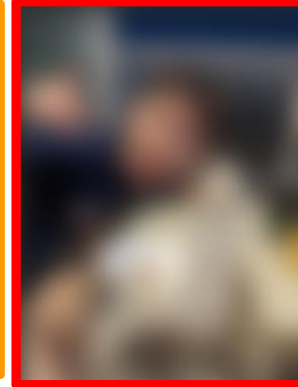
Hands-on Activities



Eco Garden



Intra and Inter Class Competitions

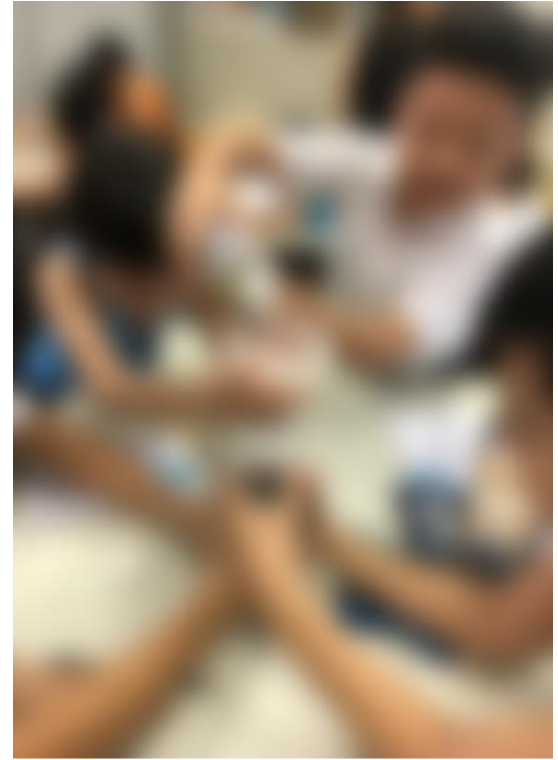


Anglo-Chinese School (Junior)

A Methodist Institution  
(Founded 1886)

16 Winstedt Road, Singapore 227988 | Tel: (65) 6733 7911 | Fax: (65) 6734 6518 |  
[www.acsj.moe.edu.sg](http://www.acsj.moe.edu.sg)

# CSI (Creative Science Investigation)



Anglo-Chinese School (Junior)

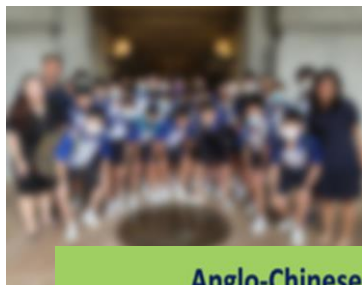
A Methodist Institution  
(Founded 1886)

16 Winstedt Road, Singapore 227988 | Tel: (65) 6733 7911 | Fax: (65) 6734 6518 |  
[www.acsj.moe.edu.sg](http://www.acsj.moe.edu.sg)



# [November] ALP: GOAL-ECG

GOOGLE



SOUP SPOON

## Anglo-Chinese School (Junior)

### Thinking Protocol

The ACS (J)'s thinking protocol (**UPAR**) guides our thought processes and encourages us to deepen our thinking.



**Understand**  
the context/problem



**Plan**  
the steps of action



**Act**  
on the plan



**Reflect**  
on the process



LEGO



Anglo-Chinese School (Junior)

A Methodist Institution  
(Founded 1886)

16 Winstedt Road, Singapore 227988 | Tel: (65) 6733 7911 | Fax: (65) 6734 6518 |  
[www.acsj.moe.edu.sg](http://www.acsj.moe.edu.sg)



Anglo-Chinese School (Junior)

A Methodist Institution  
(Founded 1886)

# Assessment Details



# P6 Assessment

Term 1	Term2	Term 3	Term 4
Non-Weighted  Bite-Sized Assessment	Non-Weighted  Bite-Sized Assessment	School Preliminary Examinations  (100%)	PSLE



Anglo-Chinese School (Junior)

A Methodist Institution  
(Founded 1886)

16 Winstedt Road, Singapore 227988 | Tel: (65) 6733 7911 | Fax: (65) 6734 6518 |  
[www.acsj.moe.edu.sg](http://www.acsj.moe.edu.sg)

# Assessment Handbook

- Assessment details will be sent via Parents' Gateway **at the end of January.**
- Assessment details will also be made available on the School Website.



Anglo-Chinese School (Junior)

A Methodist Institution  
(Founded 1886)

16 Winstedt Road, Singapore 227988 | Tel: (65) 6733 7911 | Fax: (65) 6734 6518 |  
[www.acsj.moe.edu.sg](http://www.acsj.moe.edu.sg)



# Anglo-Chinese School (Junior)

A Methodist Institution  
(Founded 1886)

## Hinch / Thoburn

# After-School P6 Academic Programme Hinch Programmes

## Hinch Programme

Provides tailored support to selected students by addressing their specific learning gaps and strengthening their foundational knowledge.

Day	Subject	Time	Target Group
Monday	Mathematics	2 to 2.50pm	Selected
Monday	Science	2.55 to 3.45pm	Selected
Thursday	Mother Tongue	2 to 2.50pm	Selected
Thursday	English	2.55 to 3.45pm	Selected



Anglo-Chinese School (Junior)

A Methodist Institution  
(Founded 1886)

16 Winstedt Road, Singapore 227988 | Tel: (65) 6733 7911 | Fax: (65) 6734 6518 |  
[www.acsj.moe.edu.sg](http://www.acsj.moe.edu.sg)

# After-School P6 Academic Programme Thoburn Programmes

## Thoburn Programme:

Provides effective provision in the core subjects for the high progress group so as to achieve their individual potential.

Term	Day	Subject	Time	Thoburn – Target Group of students
1	Monday	English	2 to 3.30 pm	Selected
2	Monday	Science and Mathematics	2 to 3.30 pm	Selected
3	Monday	Mathematics	2 to 3.30 pm	Selected
1 to 3	Thursday	Higher Mother Tongue	2 to 3pm	Selected



Anglo-Chinese School (Junior)

A Methodist Institution  
(Founded 1886)

16 Winstedt Road, Singapore 227988 | Tel: (65) 6733 7911 | Fax: (65) 6734 6518 |  
[www.acsj.moe.edu.sg](http://www.acsj.moe.edu.sg)

# Student Well-Being



**Weekly  
FTGP  
Lessons**



**Anglo-Chinese School (Junior)**

A Methodist Institution  
(Founded 1886)

16 Winstedt Road, Singapore 227988 | Tel: (65) 6733 7911 | Fax: (65) 6734 6518 |  
[www.acsj.moe.edu.sg](http://www.acsj.moe.edu.sg)



HOME > LIVE HEALTHY

## Why Is Sleep Important for Kids?

### How Many Hours of Sleep Does My Kid Need?

The younger your child, the more sleep time your kid needs. Here are some [sleep duration recommendations](#).

Newborns (0 to 3 months old) need at least 14 to 17 hours of sleep per day, whereas an infant (4 – 11 months old) need at least 12 to 15 hours of sleep per day. A toddler (1 to 2 years) will require 11 to 14 hours of sleep a day.

A pre-schooler (3 to 5 years) needs about 10 to 13 hours a day. [The amount of sleep a child of school age \(6 to 13 years\) needs is around 9 to 11 hours a day.](#)



# Student Well-Being

## 7 to 12 years old:

- ✓ Less than 2 hours of screen use a day, unless related to schoolwork.
  - ✓ Agree on a screen use plan or timetable.
  - ! Do not use screens during meals and one hour before bedtime.
  
- ✓ When using screens:
  - ✓ Use parental control settings and check content ratings to ensure content is age appropriate.
  - ✓ Talk to your child often on what they are viewing online. Offer advice regularly.
  - ! You should not give your child access to social media services.
  - ! Do not give your child mobile devices with unrestricted access to internet and applications.

## Guidance on Screen Use in Children



MINISTRY OF HEALTH  
SINGAPORE

January 2025

First Published in March 2023



Anglo-Chinese School (Junior)


A Methodist Institution  
(Founded 1886)

16 Winstedt Road, Singapore 227988 | Tel: (65) 6733 7911 | Fax: (65) 6734 6518 |  
[www.acsj.moe.edu.sg](http://www.acsj.moe.edu.sg)

# At what age should I allow my child to have their own social media account?


- Most social media platforms **require users to be aged 13 years and above**.
- While social media platforms allow people to connect with others, **constant exposure to social media content** can make us feel **anxious or overwhelmed**. It is important for **social media users to be mature enough** to navigate such feelings when using these platforms.
- Maturity can be assessed by observing your child's ability to
  - make responsible decisions to keep themselves safe online.
  - manage the pressures and feelings that come with social media use.
  - control impulses.
- Therefore, **have open conversations** with them on the risks of social media, and why they cannot access social media as they are not of age.
- For more content to support your parenting in the digital age and more, please scan the QR code at the top right-hand corner to access the **Parenting for Wellness** Toolbox for Parents.

Navigating the Digital Age



## Social Media: Is Your Child Ready for It?


While social media platforms allow people to connect with others, constant exposure to social media content can make us feel anxious or overwhelmed. It is important for social media users to be mature enough to navigate such feelings when using these platforms. Most social media platforms require users to be aged 13 years and above. **However, is age the only consideration in determining if your child is ready?**



**Things You Can Do**

Before allowing your child access to social media, have open conversations with them on the risks of social media and establish clear ground rules on how to keep themselves safe when using it. Here are some suggested topics:

- What are some potential dangers of oversharing personal information?
- What does healthy social media use look like?
- How do we keep ourselves safe on social media?
- What are some ground rules we can establish as a family?




**The maturity of your child is also an important consideration to determine their readiness for social media.**

Maturity can be assessed by observing the following:

- Their ability to make responsible decisions to keep themselves safe online.
- Their ability to manage the pressures and feelings that come with social media use.
- Their ability to control impulses.

Although your child may pick up skills to use social media quickly, they may not fully understand how to use complicated online safety tools and settings. They may also not understand how the platforms' safety features work.

© 2024 Government of Republic of Singapore.  
Part of resources were adapted from the Parenting Strategic Program (<https://www.parentingstrategic.gov.sg/>) and the Parenting PFP Program in Australia. In consultation with the Program Lead, Professor Huijiao Tang from Monash University. Use of the materials from the PFP Program is governed by the terms of the Creative Commons Attribution-NonCommercial 4.0 International License. Found at <https://www.wellnesscommons.org/contact-us/>. Your attention is drawn to Section 3 of the said license.





# Anglo-Chinese School (Junior)

A Methodist Institution  
(Founded 1886)

# Homework

# Homework

Homework contributes toward building responsibility, self-discipline and lifelong learning habits.

It is our intention to assign relevant, challenging and meaningful homework assignments that reinforce classroom learning objectives.

Homework should provide students with the opportunity to apply information they have learned, develop skills they were taught, complete unfinished class assignments, and develop independence.



Anglo-Chinese School (Junior)

A Methodist Institution  
(Founded 1886)

16 Winstedt Road, Singapore 227988 | Tel: (65) 6733 7911 | Fax: (65) 6734 6518 |  
[www.acsj.moe.edu.sg](http://www.acsj.moe.edu.sg)

# ZONES OF REGULATION

Choose your **zone**. How are you feeling?

Blue



Sad  
Sick  
Tired  
Bored  
Moving slowly

Green



Happy  
Calm  
Good to go  
Focused  
Ready to learn

Yellow



Frustrated  
Worried  
Silly  
Anxious  
I need some help

Red



Mad  
Angry  
Yelling / Hitting  
Out of control



# Anglo-Chinese School (Junior)

A Methodist Institution  
(Founded 1886)

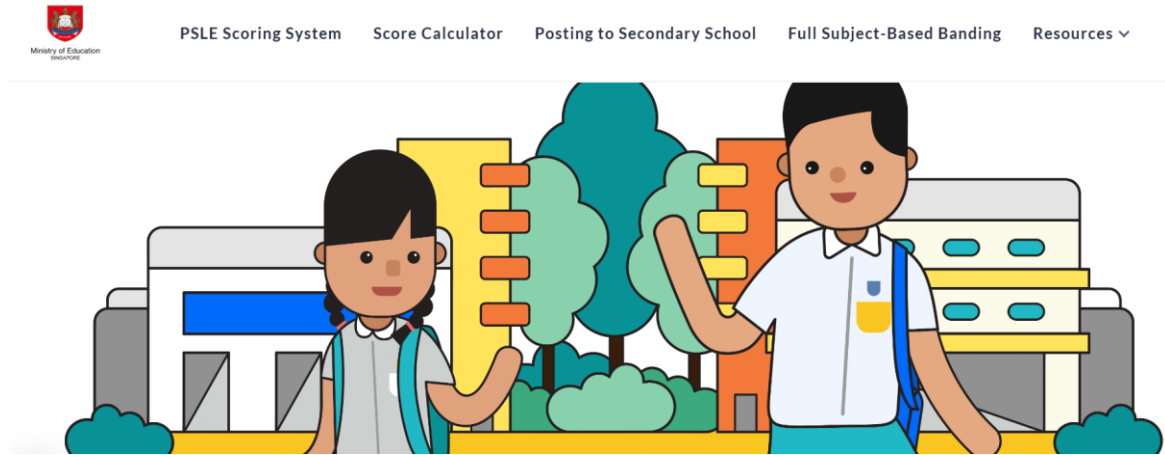
## PSLE Matters



# Information on PSLE (2025)



<https://go.gov.sg/20fwwt>



<https://www.moe.gov.sg/microsites/psle-fsbb/index.html>



Anglo-Chinese School (Junior)

A Methodist Institution  
(Founded 1886)

16 Winstedt Road, Singapore 227988 | Tel: (65) 6733 7911 | Fax: (65) 6734 6518 |  
[www.acsj.moe.edu.sg](http://www.acsj.moe.edu.sg)

# PSLE

## The PSLE changes are Part of a bigger story

Over the years, we have been fine-tuning the education system to help our students discover and develop their strengths and interests, while moving away from an over-emphasis on academic results.

Our PSLE scoring changes aim to:

- Reduce fine differentiation at a young age
- Recognise students' level of achievement, regardless of how their peers have done

(a) Reduces fine differentiation of students

Students with similar scores in each subject will be grouped into wider bands measured in 8 ALs.

(b) Reflects a student's individual level of achievement

Unlike the current T-score, the students' AL for each subject will reflect their level of achievement, rather than how they have performed relative to their peers.

AL	RAW MARK RANGE
1	≥ 90
2	85 – 89
3	80 – 84
4	75 – 79
5	65 – 74
6	45 – 64
7	20 – 44
8	< 20



Anglo-Chinese School (Junior)

A Methodist Institution  
(Founded 1886)

16 Winstedt Road, Singapore 227988 | Tel: (65) 6733 7911 | Fax: (65) 6734 6518 |  
[www.acsj.moe.edu.sg](http://www.acsj.moe.edu.sg)

# PSLE and Sec 1 Posting

Your child has six choices in selecting their secondary schools.

Your child will be posted to a secondary school based on academic merit, i.e., PSLE Score, and their choice order of schools.

If two or more students with the same PSLE Score vie for the last remaining place(s) in a school, the following tie-breakers are used in the following order:

1. **CITIZENSHIP**
2. **CHOICE ORDER OF SCHOOLS**
3. **COMPUTERISED BALLOTING**



Anglo-Chinese School (Junior)

A Methodist Institution  
(Founded 1886)

16 Winstedt Road, Singapore 227988 | Tel: (65) 6733 7911 | Fax: (65) 6734 6518 |  
[www.acsj.moe.edu.sg](http://www.acsj.moe.edu.sg)

# Full Subject Based Banding (SBB): S1 Posting

## Three Posting Groups to ensure schools are accessible to diverse learners

From the 2024 S1 cohort, MOE will facilitate the admission of P6 students into S1 through 3 Posting Groups: **Posting Group 1, 2 and 3.**

Objective: Ensures that schools continue to admit a **diverse profile of students** and students have **access to a wide range of schools.**

Unlike the-academic streams of Express, N(A) and N(T), Posting Groups will only be used for the purposes of facilitating entry into secondary school and to guide the subject levels students offer at the start of S1.

- Posting Groups assigned based on PSLE Scores, mapped from existing PSLE Score ranges for Express, N(A) and N(T) streams.
- PSLE Scores provide a good gauge of the subject levels that students can offer at the beginning of S1.

PSLE Score	Posting Group	Subject level for most subjects
4 – 20	3	G3
21 and 22	2 or 3	G2 or G3
23 and 24	2	G2
25	1 or 2	G1 or G2
26 – 30 (with AL 7 in EL and MA)	1	G1



Anglo-Chinese School (Junior)

A Methodist Institution  
(Founded 1886)

16 Winstedt Road, Singapore 227988 | Tel: (65) 6733 7911 | Fax: (65) 6734 6518 |  
[www.acsj.moe.edu.sg](http://www.acsj.moe.edu.sg)



**Affiliation  
Priority**

# How does Affiliation Priority work?

**Affiliated students are eligible for affiliation priority if they:**

- Meet the affiliate minimum requirement (AMR) set by the affiliated secondary school; **and**
- Indicate the affiliated secondary school as their first choice at Secondary 1 Posting



HENRY'S SCHOOL CHOICES	
1.	School X
2.	School Y
3.	...
4.	...
5.	...
6.	...

*Henry and Joanne are studying in a primary school that is affiliated to School X. The AMR for School X is 12.*

*Henry will receive priority for admission for School X, as it is his first choice.  
Joanne will not, as School X is her third choice.*

JOANNE'S SCHOOL CHOICES	
1.	School Y
2.	School Z
3.	School X
4.	...
5.	...
6.	...



Anglo-Chinese School (Junior)

A Methodist Institution  
(Founded 1886)

16 Winstedt Road, Singapore 227988 | Tel: (65) 6733 7911 | Fax: (65) 6734 6518 |  
[www.acsj.moe.edu.sg](http://www.acsj.moe.edu.sg)

# How does Affiliation Priority work?

**Affiliation priority and meeting the AMRs do not guarantee admission into the affiliated secondary school:**

Subject to the availability of vacancies in the school

If the demand from affiliates exceeds the available vacancies for affiliates, they will be posted by merit based on their PSLE scores

**Schools will continue to reserve 20% of the places in each Posting Group\* (Posting Group 3/2/1) for students who do not benefit from affiliation priority**

This is to ensure a minimum level of access for non-affiliates in affiliated secondary schools

Let's look at some examples in the next slides

\*Starting from 2024 S1 admission, all students will be posted into secondary schools in three groups i.e. Posting Groups 3/2/1, mapped from existing score ranges for the Express, Normal Academic and Normal Technical. The three posting groups will be used to facilitate S1 Posting.



Anglo-Chinese School (Junior)

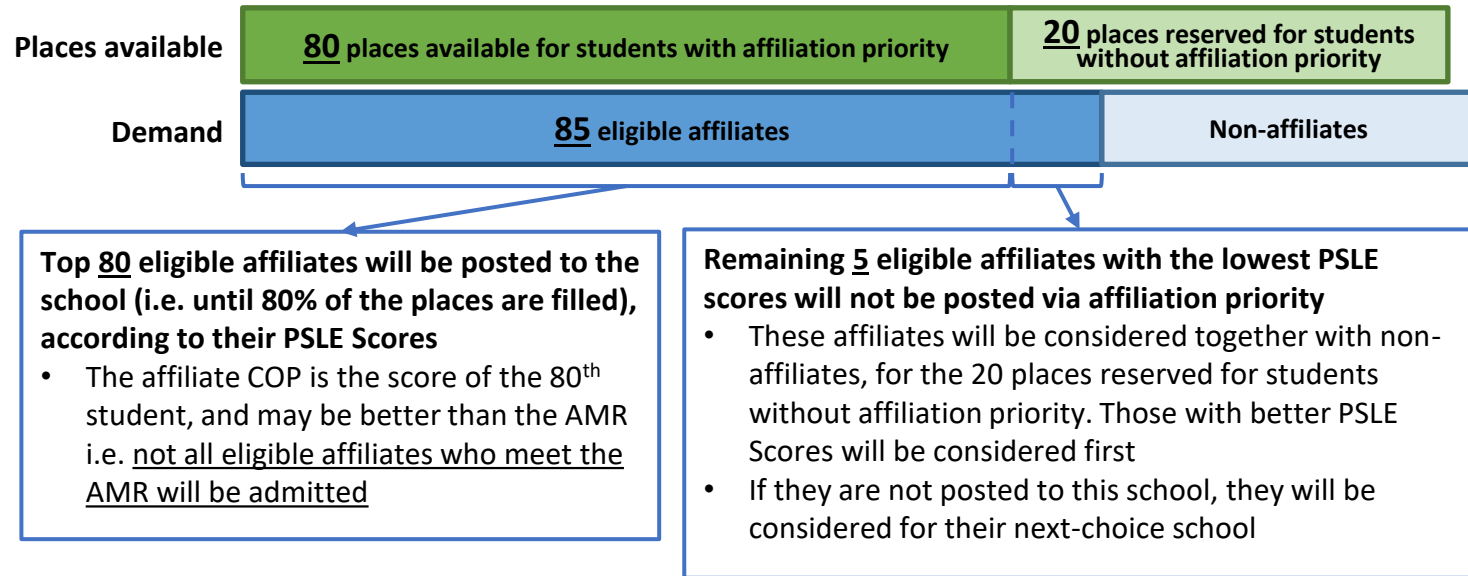
A Methodist Institution  
(Founded 1886)

16 Winstedt Road, Singapore 227988 | Tel: (65) 6733 7911 | Fax: (65) 6734 6518 |  
[www.acsj.moe.edu.sg](http://www.acsj.moe.edu.sg)



# How does the 20% reservation of places for students without affiliation priority work?

Example 1: Demand from 85 eligible affiliates for a school with 100 places (i.e. affiliate demand is greater than 80% of available places)



Anglo-Chinese School (Junior)

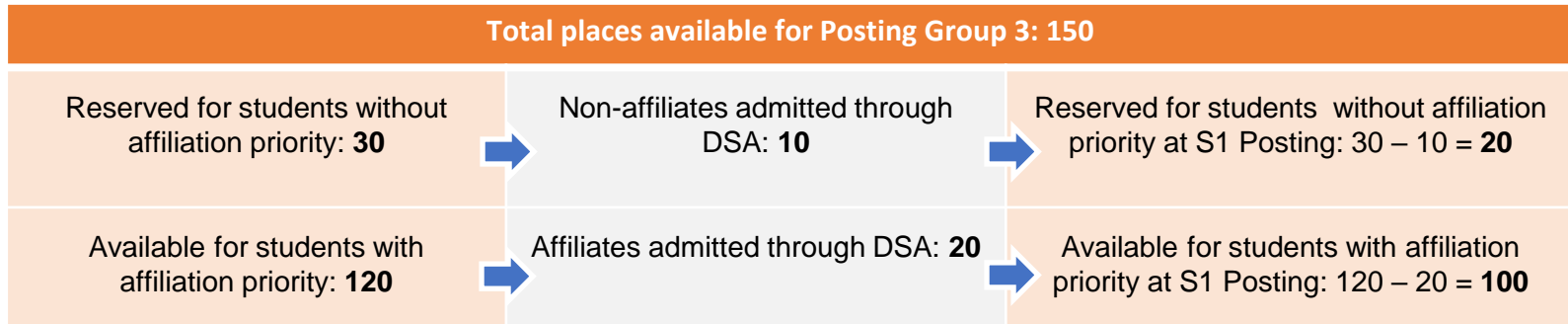
A Methodist Institution  
(Founded 1886)

16 Winstedt Road, Singapore 227988 | Tel: (65) 6733 7911 | Fax: (65) 6734 6518 |  
[www.acsj.moe.edu.sg](http://www.acsj.moe.edu.sg)

# Does this affect Direct School Admission (DSA)?

- No, affiliation priority does not apply during DSA, and students are admitted via DSA based on their achievements and talents.
- Non-affiliates admitted through DSA will count towards the 20% of places reserved for students without affiliation priority.

## Example 3: Impact of DSA on available places for affiliates and non-affiliates during S1 Posting



*\*The same treatment applies to places for the Posting Groups 1 and 2.*



Anglo-Chinese School (Junior)

A Methodist Institution  
(Founded 1886)

16 Winstedt Road, Singapore 227988 | Tel: (65) 6733 7911 | Fax: (65) 6734 6518 |  
[www.acsj.moe.edu.sg](http://www.acsj.moe.edu.sg)

# Secondary One Option to an ACS Secondary School

Affiliation benefits are applicable only when  
selecting ACS schools as **first choice**.



Anglo-Chinese School (Junior)

A Methodist Institution  
(Founded 1886)

16 Winstedt Road, Singapore 227988 | Tel: (65) 6733 7911 | Fax: (65) 6734 6518 |  
[www.acsj.moe.edu.sg](http://www.acsj.moe.edu.sg)

- For secondary schools that offer both SEC and Integrated Programme, **affiliation priority will only be given for the SEC track**. Students are eligible for affiliation priority for the SEC track if they indicate:
  - SEC track as the first choice, or
  - IP track in the affiliated school as the first choice, and SEC track in the affiliated school as the second choice.
- For the ACS family, where the primary school affiliates have two affiliated secondary schools, affiliation priority will **only** be given for the **ACS(I) SEC Programme** and **ACS (Barker Road)** if you opt in one of the following ways:

Scenario	1 <sup>st</sup> Choice	2 <sup>nd</sup> Choice	3 <sup>rd</sup> Choice
1	ACSI – SEC or ACSBR		
	<b>Affiliation priority</b>		
2	ACSI – SEC or ACSBR	ACSI – SEC or ACSBR	
	<b>Affiliation priority</b>	<b>Affiliation priority</b>	
3	ACSI – IP	ACSI – SEC or ACSBR	
	<b>No Affiliation priority</b>	<b>Affiliation priority</b>	
4	ACSI – IP	ACSI – SEC or ACSBR	ACSI – SEC or ACSBR
	<b>No Affiliation priority</b>	<b>Affiliation priority</b>	<b>Affiliation priority</b>



Anglo-Chinese School (Junior)

A Methodist Institution  
(Founded 1886)

16 Winstedt Road, Singapore 227988 | Tel: (65) 6733 7911 | Fax: (65) 6734 6518 | [www.acsj.moe.edu.sg](http://www.acsj.moe.edu.sg)

# Entering Schools through DSA-Sec

If your child has specific talents and strengths beyond the PSLE (e.g. areas such as sports, performing arts and leadership), consider the **Direct School Admission-Secondary (DSA-Sec)** as an alternative admission pathway to access secondary schools that have talent development programmes in these areas.



**Before  
MAY**

Explore schools and their talent areas, and shortlist suitable schools

**MAY**

Apply for DSA

**JUN to SEP**

Attend selection trials, interviews and auditions

**By SEP**

Receive DSA offers if successful



Anglo-Chinese School (Junior)

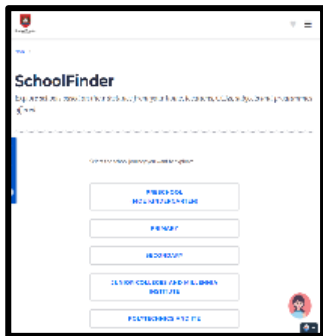
A Methodist Institution  
(Founded 1886)

16 Winstedt Road, Singapore 227988 | Tel: (65) 6733 7911 | Fax: (65) 6734 6518 |  
[www.acsj.moe.edu.sg](http://www.acsj.moe.edu.sg)

# Timeline for Sec 1 Posting Exercise

SCHOOL  
FINDER

MySKILLSfuture



- Release of PSLE results
- Online Submission of S1 School Choices and Options



- Release of S1 Posting results



OCTOBER

NOVEMBER

DECEMBER



Anglo-Chinese School (Junior)

A Methodist Institution  
(Founded 1886)

16 Winstedt Road, Singapore 227988 | Tel: (65) 6733 7911 | Fax: (65) 6734 6518 |  
www.acsj.moe.edu.sg

# RESOURCES



Anglo-Chinese School (Junior)

A Methodist Institution  
(Founded 1886)

16 Winstedt Road, Singapore 227988 | Tel: (65) 6733 7911 | Fax: (65) 6734 6518 |  
[www.acsj.moe.edu.sg](http://www.acsj.moe.edu.sg)



# Transition Materials

Supporting your child's transition through  
**Primary 5/6**  
Build a caring home environment to nurture the social and emotional skills of your child using these 5 A.C.C. Tips.

**SUPPORT**

- Encourage your child to talk to a trusted adult for guidance. E.g. Family Member, School Counsellor, Teacher.
- Help your child understand and discuss new and unfamiliar routines. Discuss the 190000 in their.
- Bring pictures about new situations. E.g. the schoolhouse, classroom during their first day.

**AFFIRM**

Encourage your child to express their feelings and concerns. Listen to their worries and reassure them. Encourage them to talk about their feelings and concerns.

**FAMILIARISE**

- Share information about the school through video, photos, or stories. Encourage your child to ask questions and share their own experiences.
- Share information about the school through video, photos, or stories. Encourage your child to ask questions and share their own experiences.

**Talk** and **Ask**

Encourage your child to talk to a trusted adult for guidance. Encourage your child to ask questions and share their own experiences.

**QUICK TIPS**

- Children need time to adjust to a new environment. Encourage your child to talk to a trusted adult for guidance.

Supporting your child's transition through  
**Secondary School**  
Build a caring home environment to nurture the social and emotional skills of your child using these 5 A.C.C. Tips.

**SUPPORT**

- Encourage your child to talk to a trusted adult for guidance. E.g. Family Member, School Counsellor, Teacher.
- Help your child understand and discuss new and unfamiliar routines. Discuss the 190000 in their.
- Bring pictures about new situations. E.g. the schoolhouse, classroom during their first day.

**AFFIRM**

Encourage your child to express their feelings and concerns. Listen to their worries and reassure them. Encourage them to talk about their feelings and concerns.

**FAMILIARISE**

- Share information about the school through video, photos, or stories. Encourage your child to ask questions and share their own experiences.
- Share information about the school through video, photos, or stories. Encourage your child to ask questions and share their own experiences.

**EMPATHISE**

Encourage your child to express their feelings and concerns. Listen to their worries and reassure them. Encourage them to talk about their feelings and concerns.

**Talk** and **Ask**

Encourage your child to talk to a trusted adult for guidance. Encourage your child to ask questions and share their own experiences.

**QUICK TIPS**

- Children need time to adjust to a new environment. Encourage your child to talk to a trusted adult for guidance.



# Resilience Boosters

**STRESS SYMPTOMS**

Struggles to pay attention in studies or activities

Tiredness

Rabbit

Excuse

Sleep

Sadness

**POSITIVE THINKING**

RECORD

REMEMBER

REPLACE

**SETTING GOALS**

SMARTER LIFE

**PROBLEM SOLVING**

SITUATION

GOALS

DISADVANTAGES

ADVANTAGES

OBSTACLES

**GO.gov.sg**



Anglo-Chinese School (Junior)

A Methodist Institution  
(Founded 1886)

16 Winstedt Road, Singapore 227988 | Tel: (65) 6733 7911 | Fax: (65) 6734 6518 | www.acsj.moe.edu.sg

## ECG Tips For Parents



<https://go.gov.sg/g/tips-for-parents>

## MySkillsFuture Student Portal (Primary)



<https://go.gov.sg/mysfpri>

## ECG What's Next



<https://go.gov.sg/whats-next-psle>



Anglo-Chinese School (Junior)

A Methodist Institution  
(Founded 1886)

16 Winstedt Road, Singapore 227988 | Tel: (65) 6733 7911 | Fax: (65) 6734 6518 |  
[www.acsj.moe.edu.sg](http://www.acsj.moe.edu.sg)

## SchoolFinder Tool

# SCHOOL FINDER



<https://go.gov.sg/secschoolfinder>

## “Welcome to Secondary School” video



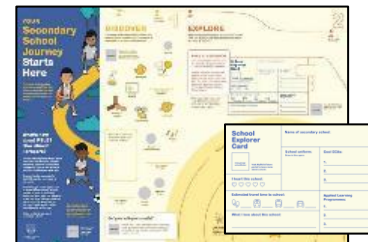
<https://go.gov.sg/welcome-to-secondary-school>

## Secondary School Education



<https://go.gov.sg/psle-sec-sch-brochure>

## Student Journey Map and School Explorer Card



<https://go.gov.sg/psle-student-journey>



Anglo-Chinese School (Junior)

A Methodist Institution  
(Founded 1886)

16 Winstedt Road, Singapore 227988 | Tel: (65) 6733 7911 | Fax: (65) 6734 6518 |  
[www.acsj.moe.edu.sg](http://www.acsj.moe.edu.sg)



# Home School Partnership

Anglo-Chinese School (Junior)



# Anglo-Chinese School (Junior)

A Methodist Institution  
(Founded 1886)

## Supporting Your Son

*“How can I support my son this year?”*

# Let's work together closely

1 Respectful  
Communication



2 Role Models



3 Real Connections



Anglo-Chinese School (Junior)

A Methodist Institution  
(Founded 1886)

16 Winstedt Road, Singapore 227988 | Tel: (65) 6733 7911 | Fax: (65) 6734 6518 | [www.acsj.moe.edu.sg](http://www.acsj.moe.edu.sg)



# Respectful Communication

Foster kind words and actions  
between schools and educators



Listen to and understand each other's perspectives and concerns regarding each child



Communicate kindly using official channels. Teachers are not required to share their personal mobile numbers



Respect each other's time by communicating during working hours



Anglo-Chinese School (Junior)

A Methodist Institution  
(Founded 1886)

16 Winstedt Road, Singapore 227988 | Tel: (65) 6733 7911 | Fax: (65) 6734 6518 | [www.acsj.moe.edu.sg](http://www.acsj.moe.edu.sg)

# Role Models

Show our children the skills and values they need for life



Find joy in everyday experiences with our children



Instill confidence by encouraging responsibility and believing in our children's abilities



Model good values in words and actions



Anglo-Chinese School (Junior)

A Methodist Institution  
(Founded 1886)

16 Winstedt Road, Singapore 227988 | Tel: (65) 6733 7911 | Fax: (65) 6734 6518 | [www.acsj.moe.edu.sg](http://www.acsj.moe.edu.sg)

# Real Connections

Cultivate strong relationships and healthy habits in this digital age

Establish good habits for our children to stay confident and in control of their technology

use



Provide a balanced mix of engaging online and offline activities, at school and at home



Build strong bonds through shared experiences and meaningful conversations



Anglo-Chinese School (Junior)

A Methodist Institution  
(Founded 1886)

16 Winstedt Road, Singapore 227988 | Tel: (65) 6733 7911 | Fax: (65) 6734 6518 | [www.acsj.moe.edu.sg](http://www.acsj.moe.edu.sg)

# RESOURCES



Anglo-Chinese School (Junior)

A Methodist Institution  
(Founded 1886)

16 Winstedt Road, Singapore 227988 | Tel: (65) 6733 7911 | Fax: (65) 6734 6518 | [www.acsj.moe.edu.sg](http://www.acsj.moe.edu.sg)

# We get you ready for your primary school journey

**SCHOOLBAG**

PARTNERING YOU ON YOUR EDUCATION JOURNEY

Hear from fellow parents, MOE educators and more on how your child can get more out of their primary school experiences. Subscribe to [Schoolbag.edu.sg](https://www.schoolbag.edu.sg) today!

SCAN TO SUBSCRIBE

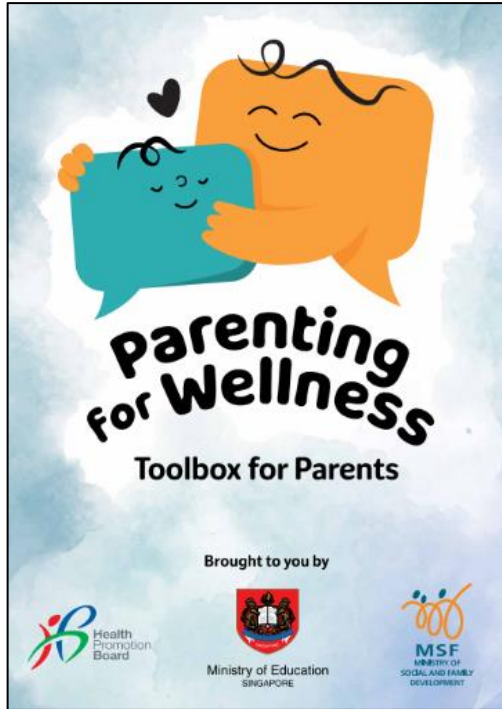


[go.gov.sg/schoolbag-newsletter](https://www.go.gov.sg/schoolbag-newsletter)



Brought to you by  
MOE Communications  
and Engagement Group

# Latest Resource: Parenting for Wellness Toolbox



An initiative to empower parents with key knowledge and skills to build strong parent-child relationships, strengthen their children's mental well-being and resilience, and parent effectively in the digital age.

The Toolbox for Parents **comprises bite-sized practical tips and strategies for parents**, such as ways to create a safe and nurturing home environment, build resilience in children, and st



Anglo-Chinese School (Junior)

A Methodist Institution  
(Founded 1886)

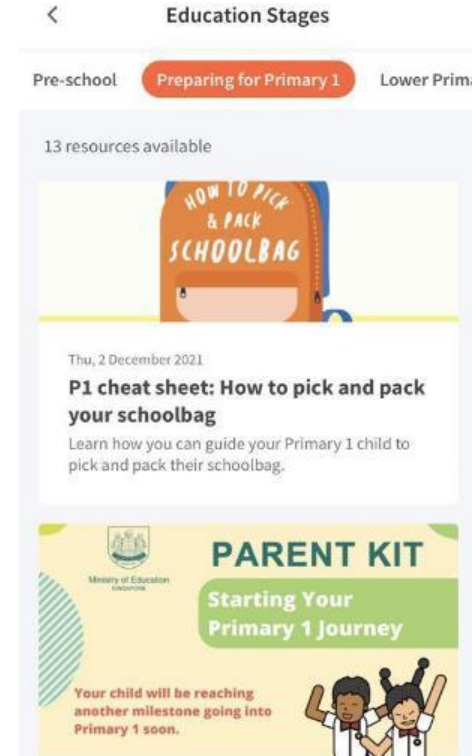
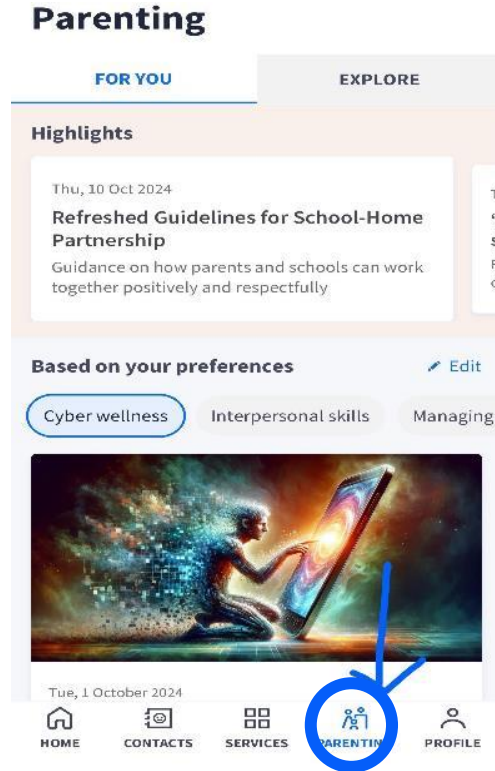
16 Winstedt Road, Singapore 227988 | Tel: (65) 6733 7911 | Fax: (65) 6734 6518 | [www.acsj.moe.edu.sg](http://www.acsj.moe.edu.sg)



# Check out Parenting Resources on Parents Gateway

## Repository of parenting resources

A repository for parents to browse resources on topics such as preparing for Primary 1, forging parent-child relationships and education pathways.



Find out more about Parents Gateway here.



Anglo-Chinese School (Junior)

A Methodist Institution  
(Founded 1886)

16 Winstedt Road, Singapore 227988 | Tel: (65) 6733 7911 | Fax: (65) 6734 6518 | www.acsj.moe.edu.sg



# Resources in PG for every educational stage

## Supporting your child through the Primary 1 Journey



Fri, 23 September 2022

[Preparing for P1 - PDF] Supporting Your Child Through the Primary 1 Journey

Click to download or view this issue on preparing your child for P1.

**Find out what your child really needs for Primary 1.**

## Teach Your Child Social Emotional Skills

BE READY FOR LEARNING

What your child may learn in school



What you can do at home



Mon, 18 October 2021

[PDF] Social skills to prepare your child for Primary 1

Click to download or view this resource to learn how you can help your child learn social skills.

**Help develop your child's social and emotional skills by referring to this infographic.**



Mon, 23 August 2021

Are you over-preparing your child for P1?

Learn how overpreparing your child may hinder learning.

**Are you over-preparing your child for primary school?**



Wed, 15 December 2021

[NLB] LearnX Reading - Primary

Create fun experiences for your child to discover the joy of reading.

**How to cultivate the love for reading? Check out resources from the National Library Board.**



Anglo-Chinese School (Junior)

A Methodist Institution  
(Founded 1886)

16 Winstedt Road, Singapore 227988 | Tel: (65) 6733 7911 | Fax: (65) 6734 6518 | [www.acsj.moe.edu.sg](http://www.acsj.moe.edu.sg)

# Check out more resources from MOE

## Parent Kit



## Parent Kit

[www.moe.gov.sg/parentkit](http://www.moe.gov.sg/parentkit)

Each Parent Kit issue contains bite-sized actionable tips with supporting resources for parents to help them support their child in their education journey.

## MOE Social Media Platforms



[www.instagram.com/parentingwith.moesg](http://www.instagram.com/parentingwith.moesg)



[www.facebook.com/moesingapore](http://www.facebook.com/moesingapore)



[www.instagram.com/moesingapore](http://www.instagram.com/moesingapore)



[www.youtube.com/moespore](http://www.youtube.com/moespore)



Anglo-Chinese School (Junior)

A Methodist Institution  
(Founded 1886)

16 Winstedt Road, Singapore 227988 | Tel: (65) 6733 7911 | Fax: (65) 6734 6518 | [www.acsj.moe.edu.sg](http://www.acsj.moe.edu.sg)

# Let's work in partnership to make 2025 ...

## A memorable year for Our Boys!

- Create opportunities for our boys to build firm ties and friendships.
- Prepare them for academic challenges.
- Create school experiences to prepare our boys for the future.



Anglo-Chinese School (Junior)

A Methodist Institution  
(Founded 1886)

16 Winstedt Road, Singapore 227988 | Tel: (65) 6733 7911 | Fax: (65) 6734 6518 | [www.acsj.moe.edu.sg](http://www.acsj.moe.edu.sg)



**To God Be  
The Glory  
The Best Is Yet  
To Be**